

Action, Kevlar® CUT & SLASH-RESISTANT Gloves

FUNCTIONAL BENEFITS:

Leather palms wrap around sides of fingers, while thumb is all leather

Durable Tri-tan leather offers greater protection, longer wear

Glove body made of knit Kevlar® for excellent cut and slash resistance, plus flame-retardancy

Palms attached to knit shell using Kevlar® thread for greater seam integrity

Choice of styles to suit many applications

APPLICATIONS:

Construction
Metal Stamping
Glass Handling
Forestry
Material Handling

Assembly
Sheet-metal Work
Automotive
General Purpose

What is THT?

Introducing the most revolutionary change to knit gloves since we learned to count to 5: a glove that's shaped like a human hand.

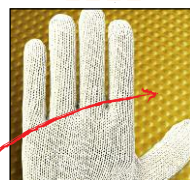
True Hand Technology, **THT**® from Superior is the first knit glove that's actually designed to fit your hand perfectly. The greater comfort and wear of a knit glove is now available with improved fit and dexterity.

How? It's simple. . . really, every other string knit glove is shaped the same way. Unfortunately none of them are shaped like a human hand. **THT**® changes this by creating a glove where the crotch of the baby finger is lower, just like it is on your hand.

Without **THT**



With **THT**



Kevlar® Cut and Slash-resistant Gloves

Our 'Action' leather gloves have become the industry standard for heavy-duty cut resistance and durability. All models combine our own abrasion-resistant Tri-tan side-split leather (except the grain leather version SKGLP) with the excellent comfort and cut resistance of a seamless-knit Kevlar® glove. And as an added benefit, Kevlar® will not melt or drip around heat and open flame, increasing the range of applications. Fingers of the leather palms extend around the sides. This is one of the greatest wear areas, as seams tend to rub and annoy, often coming apart between the fingers. Our wrap-around style increases protection and comfort; extends glove life; and greatly improves launder-ability. Complete with full leather thumb, palms are attached to the knit shell with Kevlar® thread for greater durability.

For more information on Latex Palm-Coated click the following link:

http://www.superiorglove.com/Latex_PalmCoated_C92.html

- SKLP** "Action" wraparound split Leather palm on a Kevlar® seamless knit glove. Sizes XS - XXL
- SKLPEV** Same great features, but with a snug-fitting wide elastic wrist that adjusts with velcro closures. Keeps gloves comfortably in place. Sizes S - XL
- SKLPR** "Action" tri-tan side-split leather palms and index fingers for 'double action' plus all the regular 'Action' features. Sizes S - XXL
- SKLPTK** "Action" leather palm and finger tips and knuckle strap on a Kevlar® seamless knit glove. Sizes S - XL
- SKGLP** "Action" full-grain leather palms for outstanding comfort, flexibility and endurance, as well as some water and oil-repellant properties. Sizes S - XL
- SKGLPLC** Same features as the SKGLP but with a 4" split leather cuff

SKLP

LBS.	NEWTONS	ASTM Puncture
18.0	80.8	3

SKLPR

LBS.	NEWTONS	ASTM Puncture
28.5	126.7	4

SKGLP

LBS.	NEWTONS	ASTM Puncture
9.8	43.6	2

DuPont™
Kevlar® is a registered trademark of E.I. du Pont de Nemours and Company.

ACTION



Engineered hand protection for every industry®

For Ordering Info or Questions:

Phone (519) 853-1920

Fax (519) 853-4496

Toll Free (800) 265-7617

Email sales@superiorglove.com

www.superiorglove.com